

TESTED TO COMPLY WITH



MEETS  
EN ISO:3059  
Specifications



# EagleEye™ DELUXE

## LED UV-A/White Light Hands-Free Inspection Kit

EK-3000SC

### Key Features:

- ▶ Free hands to hold yoke and spray can
- ▶ ASTM E3022-15 Compliant
- ▶ Meets EN ISO:3059 specifications



LED LAMP WITH  
HEAD STRAP  
Option for hands-free  
operation

FACEPLATE WITH  
INTEGRAL UV-A  
PASS FILTERS

LONG LASTING  
UV-A LENSES

ULTRA  
VIOLET  
LED



### Ideal for:



Magnetic Particle  
Inspection



Ship  
Inspection



Oil & Gas  
Inspection



**MAKES MPI A  
ONE-PERSON JOB  
WHILE OUT IN THE FIELD.**



LED LAMP WITH  
SPRAY MOUNT  
Attaches easily to ANY  
magnetic particle can —  
hold yoke in other hand



**CERTIFICATE OF  
CONFORMANCE**  
included with each lamp

# EagleEye™ DELUXE EK-3000SC

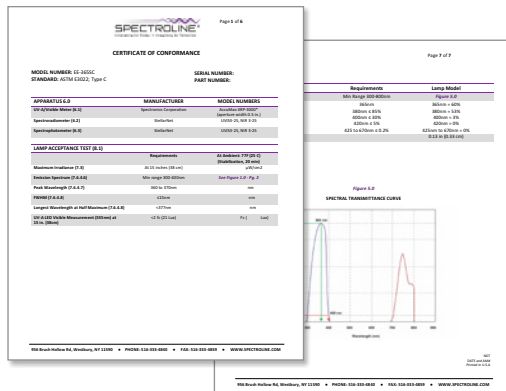
MODEL	NOMINAL STEADY-STATE UV-A (365 nm) INTENSITY at 15 in (38 cm) ①	UV-A COVERAGE AREA at 15 in (38 cm) at minimum 1,200 μW/cm²	VISIBLE LIGHT MEASUREMENT	CHARGING CRADLE
EE-365SC	3,500 μW/cm²	5 in (13 cm)	< 1 foot-candle (11 lux)	Two-battery capability with AC and DC cord sets Available in 100-120V, 230V and 240V versions

<b>Light Source:</b>	(2) UV-A LEDs, (3) white light LEDs
<b>Lamp Style:</b>	Cordless handheld
<b>Dimensions:</b> (L x W x H)	3.75 x 2.25 x 1.85 in (9.5 x 5.7 x 4.7 cm)
<b>Weight:</b>	8 oz (227 g) with battery
<b>Run Time:</b>	90 minutes (continuous)
<b>Charge Time:</b>	4 hours (one or two batteries)
<b>Power Requirements:</b>	One 3.7V 2600mA/Hr lithium-Ion battery (rechargeable)

① UV-A intensity reading taken with the Spectroline® AccuMAX™ Series meter, and is factory set to the value shown.



## CERTIFICATE OF CONFORMANCE

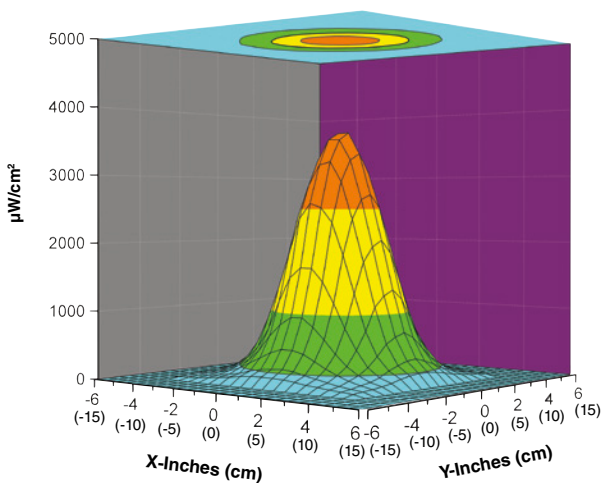


## EK-3000SC EagleEye™ DELUXE Kit

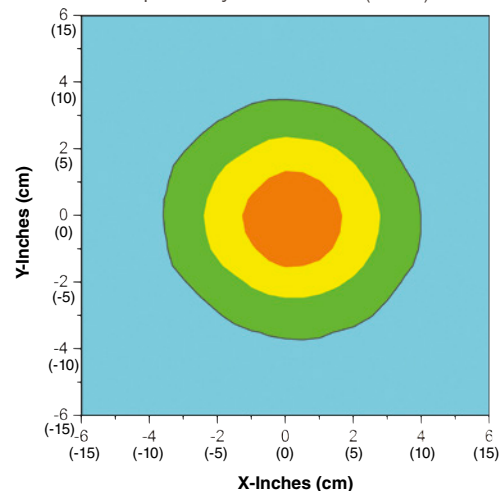
Comes complete with EE-365SC UV-A/white light LED lamp with a lanyard, head strap, lamp mount, two replacement splash guards with integral particulate filters, two spare rechargeable batteries, smart charging cradle with AC and DC cord sets, UV-absorbing spectacles and padded carrying case.

## UV-A Beam Profiles

Surface Contour Profile at 15 in (38 cm)



Top Intensity Profile at 15 in (38 cm)



**SPECTRONICS CORPORATION**

[www.spectroline.com](http://www.spectroline.com)

956 Brush Hollow Rd, Westbury, NY 11590 USA  
800-274-8888 • 516-333-4840

DISTRIBUTED BY:

NDT  
01/18 A18011  
PRINTED IN USA